

44 = 29.5

29.6

25

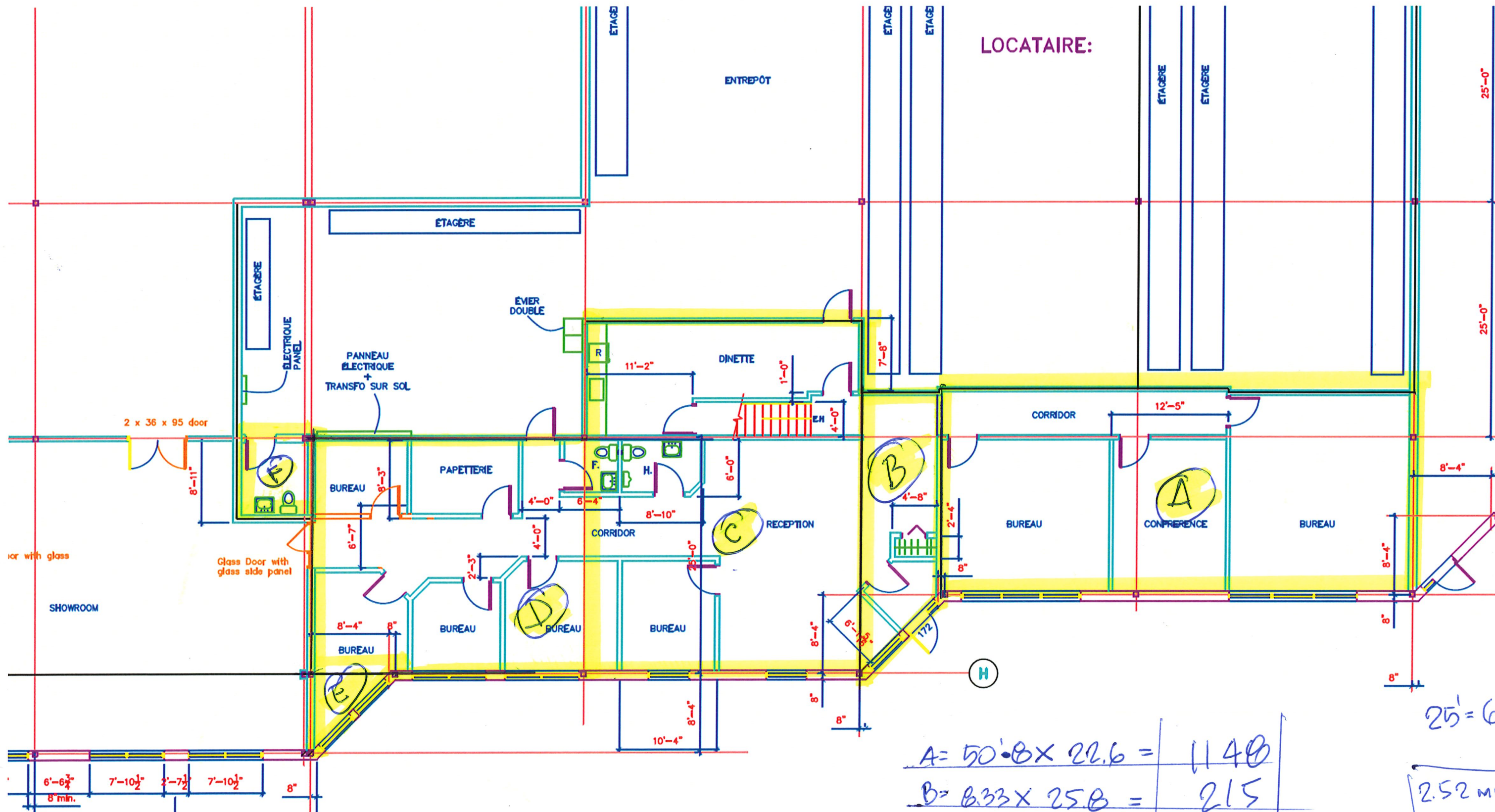
LOCATAIRE:

LOCATAIRE:

$G = 44.3 \times 33.5 =$
 $H = 8.7 \times 33.5$

1485
 $291 = 1775$

total 3375
 + 1775
 5150# EXCLUDING 2nd Floor offices
 EXCLUDING SHOWROOM



$A = 50'8" \times 22.6 =$	1140	$25' = 63 \text{ mm}$ 2.52 mm/foot $120 / 23$
$B = 8.33 \times 25.8 =$	215	
$C = 29.7 \times 37.7 =$	1120	
$D = 29.7 \times 26.2 =$	770	
$E = (9 \times 9) .5 =$	41	
$F 9 \times 8 =$	72	